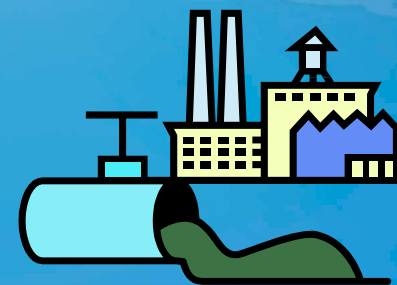




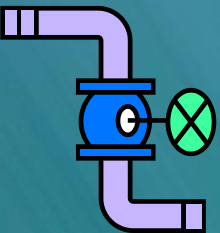
Bellow sealed globe valve





DIN Standard Bellow Sealed Globe Valve Structural Features:

DIN Standard Bellow Sealed globe valve (Os & Y Type) is applied to various kinds of working conditions of pipelines such as petroleum, chemical industry, pharmacy, fertilizer, and power industry, etc, under nominal pressure in the PN1.6 40 MPa and operating temperature at -20 – 350℃, that is used to cut off or connected to the pipeline medium.



DIN Sandard Bellow Sealed Globe Valve Main Structural Features:

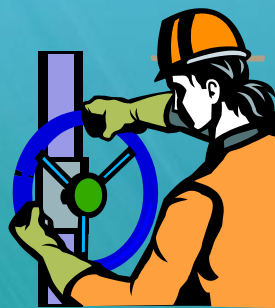
- 1. This bellow sealed globe valve has logical structure, reliable seal, excellent performance and nice design.**
- 2. Sealing face of the lobe valve is overlaid by STL, which is friction-resistant, corrosion-resistant to ensure a long time use life.**
- 3. Stem Heat-Treatment and surface nitriding-treatment to sure function of corrosion-resistance and friction-resistance.**
- 4. The globe valve has double seal, thus the capability is more reliable.**
- 5. The stem of the globe valve may show the position of lift, thus it is more clearer.**
- 6. The parts material, flange and butt welding dimension may selected according to current operating condition or users's requirement to meeting the requirements of various engineering.**

DIN Standard Bellow Sealed Globe Valve Technical Specification:

- 1. Construction: BB-BG-OS&Y**
- 2. Operation: Manual, Pneumatic**
- 3. Design Standard: DIN3356**
- 4. Face to Face Dimension: DIN3202**
- 5. Flange Ends: DIN2543-2545**
- 6. Test & Inspection: DIN3230**

DIN Bellows Sealed Globe Valve Specifications:

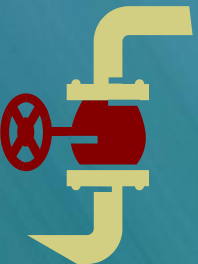
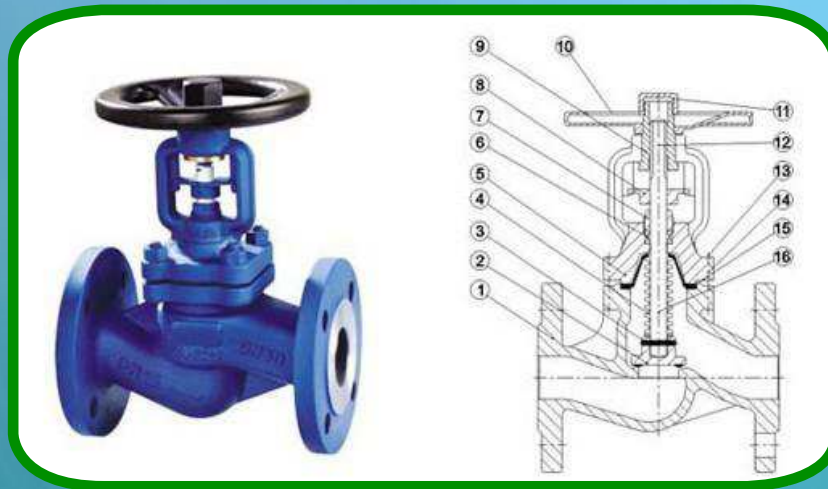
- 1. Pressure Rating: 1.0-4.0Mpa**
- 2. Specification: DN15-DN500**
- 3. Material: GS-C25,CF8,CF3**
- 4. Standard flanges: DIN**



DIN Standard Bellow Sealed Globe Valve Specifications:

PN (MPa)	Shell Test (MPa)	Sealing Test (MPa)	Suitable Temp (°C)	Suitable Medium
1.6	2.4	1.76	-20°C-350°C	Water, Steam, Oil, Etc.
2.5	3.75	2.75		
4.0	6.0	4.4		

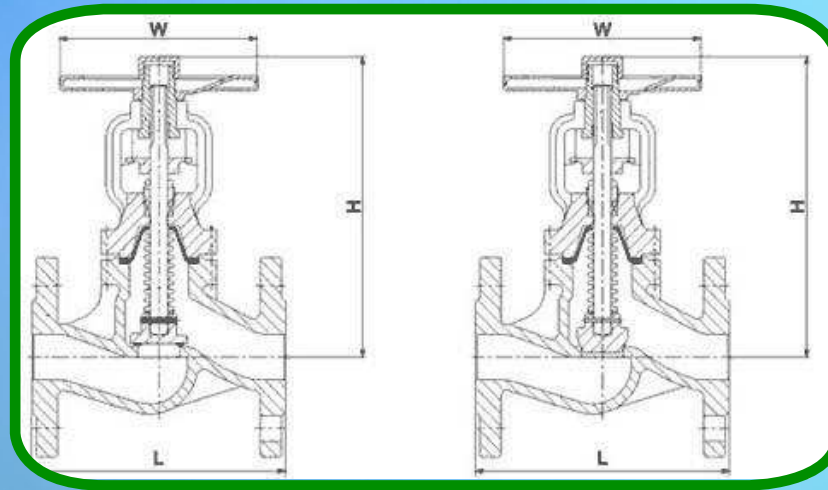
Bellow Sealed Globe Valve Main Parts Materials:



NO.	PART NAME	MATERIAL
1	Body	GS-C25, CF8, CF3
2	Disc	2Cr13, F304, F316
3	Hinge Pin	F304, F316
4	Bellows combination	F304, F316
5	Bonnet	GS-C25, CF8, CF3
6	Packing	Flexible graphite, PTFE
7	Gland	25#, F304, F316
8	Locator	25#, F304, F316
9	Stem Nut	ZQA19-4
10	Hand wheel	Carbon Steel
11	Cap	25#
12	Oil Nozzle	Brass
13	Hexagon Nut	ASTM A193 2H, A193-8, A193-8M
14	Bolt	ASTM A193 B7, A193-B8, A193-B8M
15	Gasket	Flexible graphite+S.S. PTFE
16	Stem	2Cr13, F304, F316



Bellow Sealed Globe Valve Main Dimension:

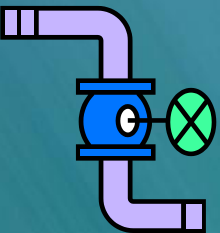


PN	PN16														
DN	15	20	25	32	40	50	65	80	100	125	150	200	250	300	
L	130	150	160	180	200	230	200	310	350	400	480	600	730	850	
H	195	195	207	218	225	230	272	290	355	410	425	540	665	720	
W	120	120	140	140	160	180	180	200	250	300	300	100	520	520	
Wt.(kg)	4	4.5	5	7	9	12	18.5	23	38.5	56	75	113.5	235	395	
H	7	7	12	13	14			23	28	35	42	52	64	75	
kv	4.2	7.4	12	19	30	47	77	120	188	288	410	725	1145	1635	



PN	PN25													
DN	15	20	25	32	40	50	65	80	100	125	150	200	250	300
L	130	150	160	180	200	230	200	310	350	400	480	600	730	850
H	195	195	207	218	225	230	272	290	355	410	425	540	665	720
W	120	120	140	140	160	180	180	200	250	300	300	100	520	520
Wt.(kg)	4	4.5	5	7	9	12	18.5	23	38.5	56	75	113.5	235	395
H	7	7	12	13	14	15	19	23	28	35	42	52	64	75
kv	4.2	7.4	12	19	30	47	77	120	188	288	410	725	1145	1635

PN	PN40													
DN	15	20	25	32	40	50	65	80	100	125	150	200	250	300
L	130	150	160	180	200	230	200	310	350	400	480	600	730	850
H	195	195	207	218	225	230	272	290	355	410	425	540	665	720
W	120	120	140	140	160	180	180	200	250	300	300	100	520	520
Wt.(kg)	4	4.5	5	7	9	12	18.5	23	38.5	56	75	113.5	235	395
H	7	7	12	13	14	15	19	23	28	35	42	52	64	75
kv	4.2	7.4	12	19	30	47	77	120	188	288	410	725	1145	1635





TEL: 0086 577 57781015

FAX: 0086 577 67985602(24)

E-mail: goole4@goolevalve.com

Website 1: <http://www.goolevalve.com>

Website 2: <http://www.chinavalve1.com>

ADD: He_yi Industrial Zone,Oubei Town,Wenzhou City,Zhejiang Province,China