

▲Graphite coated canvas is the most effective dry lubricant available for use on the back of sanding belts to reduce heat and friction, increase speed and provide longer sanding belt wear.

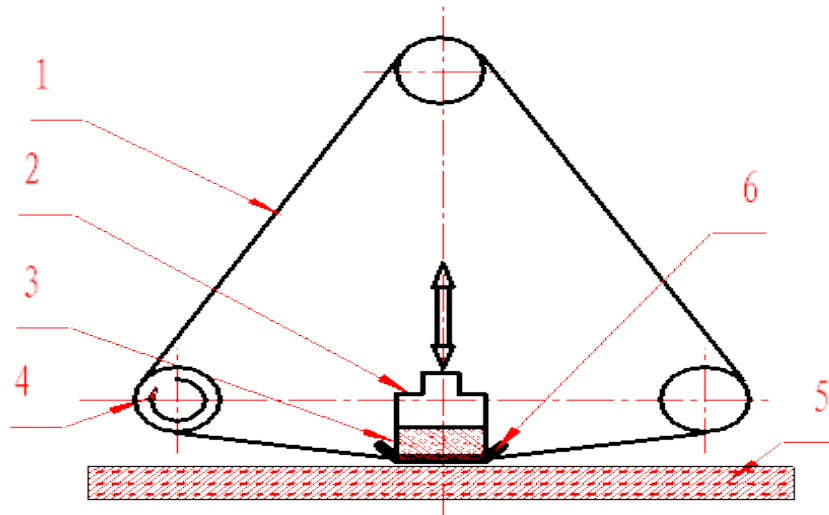
Internationally, the graphite coated canvas can be divided into two types: Standard Grade (GC) coated canvas and Heavy Duty (HD) coated canvas.

GC type is using the natural flake graphite. With soft material quality, Low friction coefficient and excellent lubricating property, GC type is widely used in small sander and the wide-belt sander for plywood or other lighter sander. In the heavy duty belt sander, GC type can also work, but the wear and tear is faster.

HD type is using the natural flake graphite and granular graphite, combined with the highest quality binder for tough applications. The friction coefficient is a little higher than the GC type, but it greatly improved abrasion performance, heat resistance and the service life. This type was specially developed for high-speed and heavy-duty sanders, such as sander for MDF&PB.

In many cases, the two types above can be used interchangeably, but the right choice is helpful to improve the sanding quality, prolong the service life of belt and graphite coated canvas.

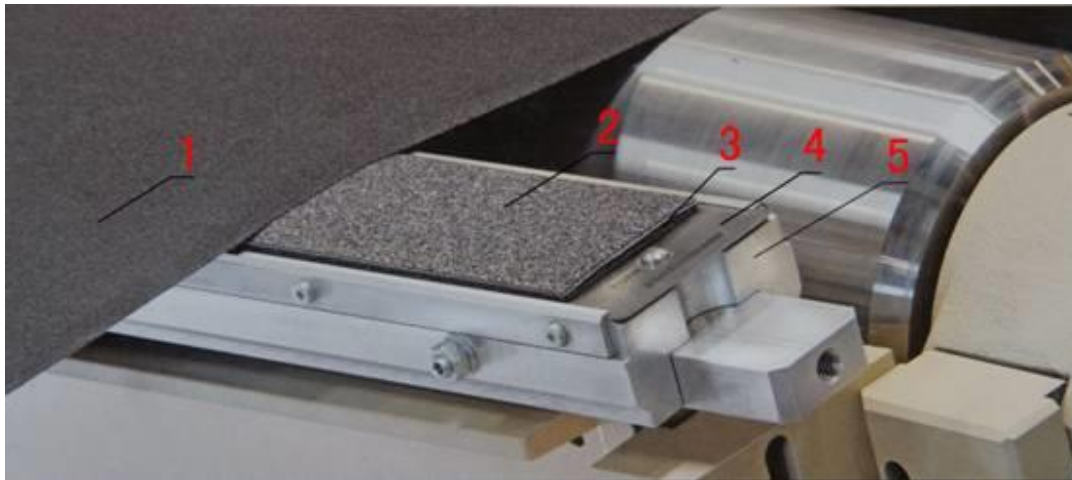
Working principle ↓



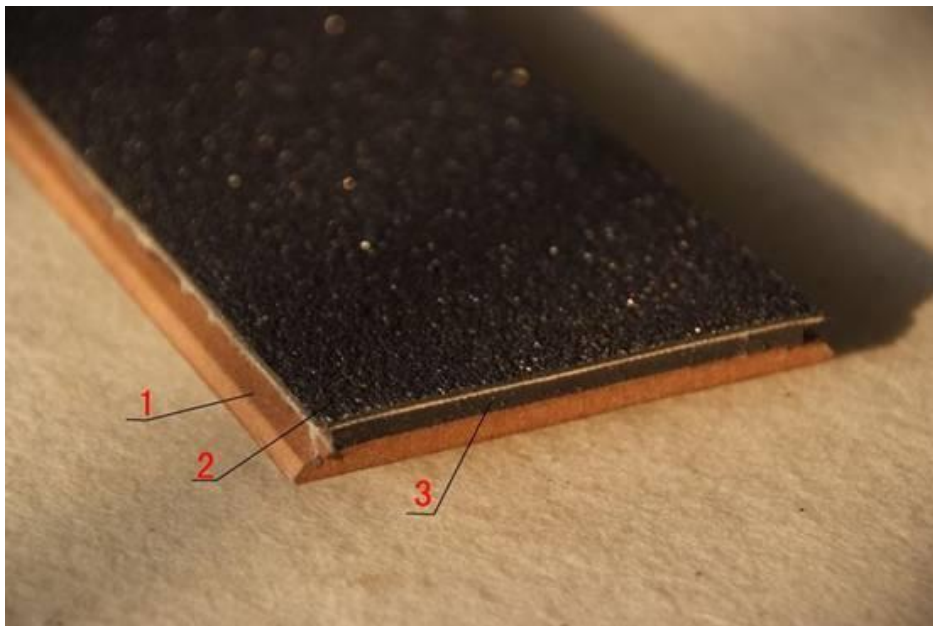
1. Sanding belt 2. pressing block 3. foam 4. Drive wheel 5. work piece 6. graphite



▲ With the development of technology, some sander company invent a kind of unit equipment, which is more convenience to change the graphite coated canvas.



1. Sanding belt 2.graphite coated canvas 3.foam/ wool felt 4.Steel plate 5.pressing block



1. HDF plate (length1400-3400mm) 2.graphite coated canvas 3.Gum elastic pad

Graphite cloth and elastic pad, in sanding cost, it is not worth mentioning, but its importance is indispensable.

QINGDAO JINWEN BUSINESS CO., LTD

TEL: 0532-67794728

FAX: 0532-67794753

EMAIL: qingdaojinwen@oneasia.co.jp