



900 Series DIN Spring loaded Pressure Safety Valve



 工奥阀门
GOOLE GOOLE VALVE





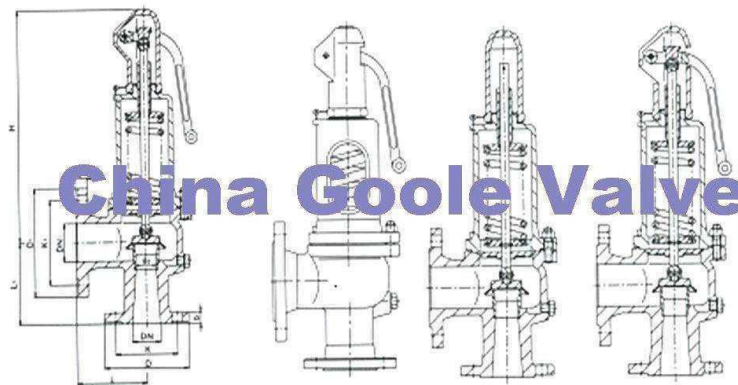
DIN Standard Safety Valve Features:

Safety valves were first used on steam boilers during the industrial revolution. Early boilers without them were prone to accidental Explosion.

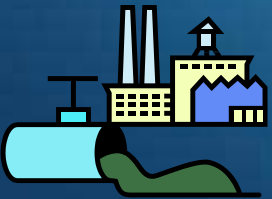
Safety valves also evolved to protect equipment such as pressure vessel (fired or not) and heat exchangers. Safety valve term should be limited to compressible fluid application (gas, vapor, steam).

The two general types of protection encountered in industry are thermal protection and flow protection.

For liquid-packed vessels, thermal relief valves are generally characterized by the relatively small size of the safety valve necessary to provide protection from excess pressure caused by thermal expansion. In this case a small valve is adequate because most liquids are nearly incompressible and so a relatively small amount of fluid discharged through the relief valve will produce a substantial reduction in pressure.



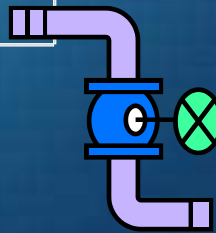
901 Type	902 Type	911 Type	912 Type
Closed Cap	Opening Cap	Closed Cap	ClosedCap
Closed top Cover	Opening Top Cover	Gas-Sealed Top Cover	Opening Top Cover
With Level	With Level	Without Level	With Level



DIN Standard Safety Valve Specification

Type	Nominal Pressure	Body Material	Nominal Diameter	Working Temp.
901/902/911/912	PN40/16	1.0619+N	DN20/32-DN150/250	-10C~450C
901/911	PN40/16	1.4408	DN20/32-DN100/150	-60C~400C

DN	20/32	25/40	32/50	40/65	50/80	65/100	80/125	100/150	120/200/	150/250
Throat Diameter do(mm)	18	22	29	36	45	58	72	80	100	125
Orifice Area Ao(mm)	254	398	661	1018	1590	2688	4072	6362	8825	12266
Weight (Kg)	8.5	10	14	20	28	40	53	80	125	165



Safety Valve (Pressure Relief Valve) Dimension

901, 902, 911, 912 Type Safety Valve											
DN×DN1		20/32	25/40	32/50	40/65	50/80	65/100	80/125	100/150	120/200/	150/250
D	PN16	105	115	140	150	165	185	200	220	250	285
	PN40								235	220	300
K	PN16	75	85	100	110	125	145	160	180	210	240
	PN40								190	220	250
B		20	20	20	21	22	24	26	28	31	34
D1	PN16	140	150	165	185	200	220	250	285	340	405
K1		100	110	125	145	160	180	210	240	295	355
B1		19	19	20	20	20	20	22	22	27	29
L		85	100	110	115	120	140	160	180	200	220
L1		95	105	115	140	150	170	195	220	250	285
≈H		298	311	315	355	405	555	580	690	845	890
Vent(with plug)		G3/8"				G1/2"					





TEL: 0086 577 57781015

FAX: 0086 577 67985602(24)

E-mail: goole4@goolevalve.com

Website: <http://www.chinavalve1.com>

ADD: He_yi Industrial Zone,Oubei Town,Wenzhou City,Zhejiang Province,China