



**HonesTrader International Co., Ltd.**

## **Handheld Inkjet Printer B30 series**

## Contents



**Introduction**



**Characteristic**



**Usage**



**Application**

# 01

## Introduction

| Product structure | Packing list | Product parameter | Functional configuration | Product information





## Product structure





## Packing list



B30 series  
Handheld Inkjet Printer



Instrument case



Ink Cartridge



Brochure



Sheet metal locator



Auxiliary roller assembly



U disk



# Product parameter



Content	Specification
Display screen	4.3 inch color LCD capacitive touch screen
Status Display	Green means ready status; blue means printing status; red means alarm status
Operation interface	User-friendly UI design, simple operation
Printing content	Text, numbers, symbols, QR codes, barcodes, pictures, time, date, counter, etc.
Printing material	Wood, carton, stone, MDF, pipe, metal, plastic, aluminum foil, cable, etc.
Printing font	Vector font, dot matrix font
Printing accuracy	300dpi
Printing rows	Adjustable from 1 to 10 rows
Font height	Adjustable from 2.5mm-25.4mm
Printing distance	2-5mm (Distance between nozzle and object )

Content	Specification
Printing speed	30m/min
Printing orientation	360 degree coding
Ink color	Solvent: red, yellow, blue, black, green, Water-based: red, yellow, blue, black,
Ink capacity	42ml
External interface	USB、 Optical interface、 power interface
Battery capacity	2600mAh
Standby time	20 h
System power consumption	Average less than 5 W
Working environment	0-40℃
Working humidity	10%-80%
Power	DC9V-2A
Weight	460g
Storage capacity	512MB
Continuous printing time	8H
Size	136mm*50mm*232.5mm

## Product information



### ➤ B30 Water-based model

With handheld mode, variable printing function

Use water-based ink cartridges; printing carton, wood, gypsum board, fiberboard and other absorbent materials



## Product information



### ➤ B35 Quick-drying model

With handheld mode printing, induction mode printing, variable printing functions

Universal water-based, quick-drying series ink cartridges, The machine can automatically identify the ink cartridges and adjust the best printing parameters

Applied to non-absorbent materials such as coated paper, plastic, food bag, ceramic, metal, PV tube, aluminum foil, etc.





# 02

## Characteristi

| Exterior design | Product advantages | Product Honor |





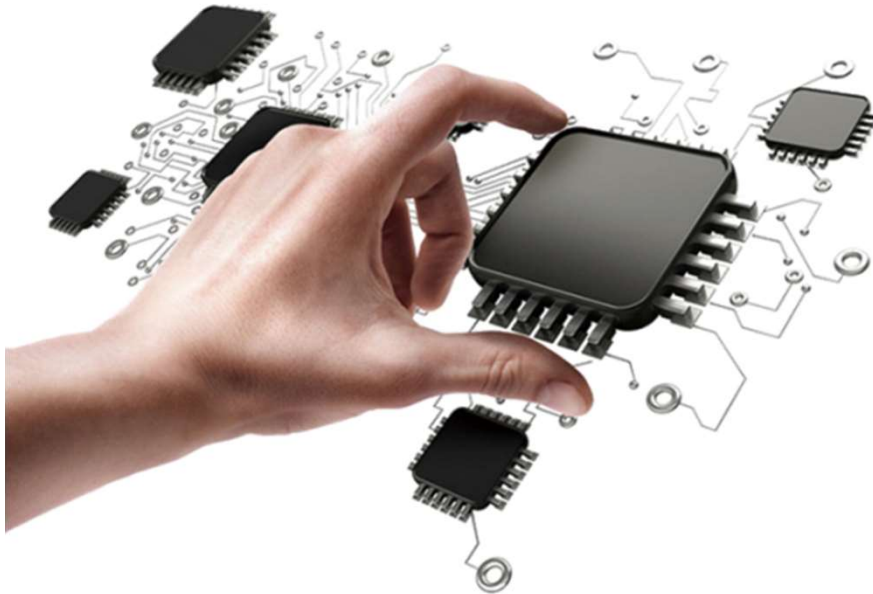
## Exterior design



- ✓ Ergonomic design, comfortable to hold;
- ✓ The whole machine is light in weight, only 460g;
- ✓ The material used in the whole machine is environmentally friendly and all have passed ROHS certification;
- ✓ The body is fully enclosed design, the ink cartridges and interfaces are not leaking, and the IP level can reach IP44;



## Product advantages



- 4-core CPU, 512MB running space:

B30 series handheld inkjet printer using newly developed circuit control, significantly improved the hardware configuration on the basis of the 6105 series, ensure that the operation of the system is more stable and efficient.

## Product advantages



- The print head is fully protected, and the ink cartridge is more durable:

Simple and beautiful nozzle protection scheme, which can effectively protect the nozzle;

Prevent dry head and provide physical protection to make the ink cartridge more durable;

Just put on the protective cover of the print head after use, no need to disassemble and install the ink cartridge frequently;



## Product advantages



- Easy to disassemble and assemble the ink cartridge:



Bentsai's unique hardware protection scheme can disassemble and install the ink cartridges when the machine is turned on, without worrying about damaging the print head, giving you a different experience.

## Product advantages



- 4.3 inch color touch screen, convenient UI operation:



B30 series handheld inkjet printer using 4.3-inch large color touch screen, the screen is more sensitive and the display range is larger;

With the humanized UI design developed by Bentsai, it is easy to operate and has a good user experience;

## Product advantages

- Ink parameters are adjustable, and the type of ink cartridges can be replaced:



B30 series handheld inkjet printer ink parameters are adjustable, use our original ink cartridges, the types of ink cartridges can be replaced at will;

The user adjusts the corresponding ink parameters according to the instructions to ensure the printing quality without changing the machine;



- 14 languages, switch at will:



B30 series handheld inkjet printer is equipped with 14 languages and corresponding input: Chinese, Traditional, English, Japanese, German, Spanish, Russian, Arabic, Italian, Portuguese, French, Thai, Vietnamese, Persian, Turkish, Users can switch at will, wide range of use; (Only Simplified Chinese for domestic sales)

## Product advantages

- Handwriting input method, association input function



BT-HH6105 handheld inkjet printer configure handwriting input and associative input functions to make each user's input more worry-free and effortless.



## Product advantages

- Database export and import function



BT-HH6105 handheld inkjet printer break away from old handheld printers relying on terminal input, you can import content to the machine through the PC, let Bentsai handheld inkjet printers communicate with each other; interact with PC.

## Product advantages



### ➤ Variable printing function



B30 series handheld inkjet printer can realize variable text, QR code, barcode printing, realize one thing, one code, variable identification!

# Product Honor

## ➤ Product certification



The Certification of B30 series handheld inkjet printer can be exported to more than 90% of the world's countries without barriers, escorting customer exports.



## Product Honor

➤ Independent development, patent protection: (16 patents have been applied)



Application type	Application name	Application number	Technical point
Utility model	Hand-held printer	2018218440052	Roller positioning structure
Utility model	Hand-held printer	201821843977X	Nozzle protection cover
Utility model	Hand-held printer	2018218439958	Electrical interface sealing structure
Utility model	Hand-held printer and its ink cartridge	2018218450016	Ink cartridge storage device and application
Utility model	Hand-held printer	201821844995X	Range identification structure of the printer
Utility model	Hand-held printer	2018218439784	Battery cover locking structure
Invention	Hand-held printer	2018113318190	The entire structure of the inkjet printer
Invention	A printing method and system for automatically selecting colors of two-color ink cartridges	2018113329000	Two-color ink cartridges automatically select printing colors
Invention	Printing device and printing method capable of rotating and editing printing content in multiple directions	2018113328807	Multi-directional rotation edit printing
Invention	Printing method and printing system capable of nesting content	2018113318203	Nested printing
Invention	Printing method and device for automatically identifying printing direction	2018113318222	Automatically recognize printing direction
Invention	Printing method and device for automatic variable content printing	2018113328703	Automatic variable content
Exterior	Hand-held printer	2018306324624	Overall appearance
Exterior	Hand-held printer	2018306327675	Overall appearance
Exterior	Hand-held printer	2018306597335	Overall appearance
Exterior	Hand-held printer	2018306597354	Overall appearance

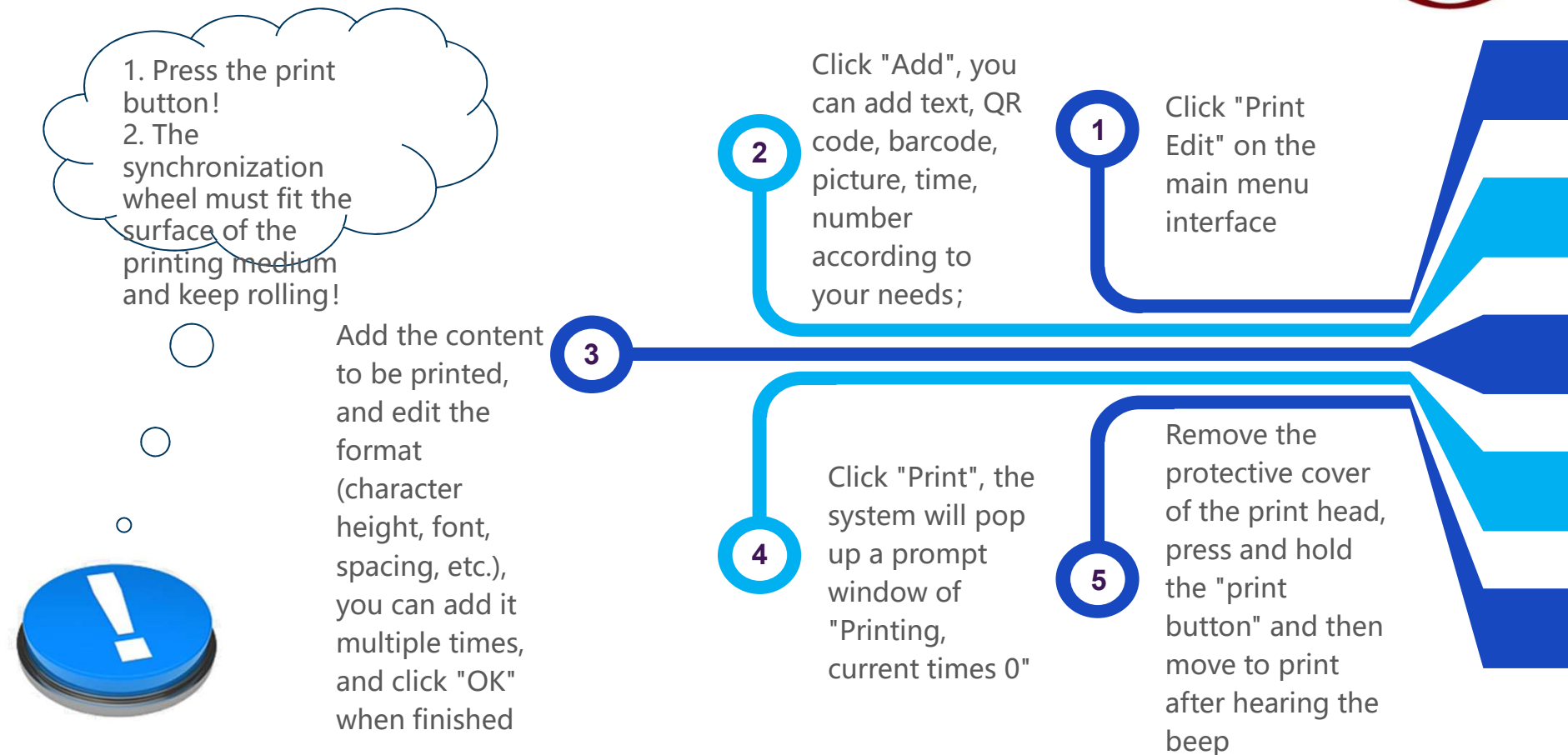
# 03

## Usage

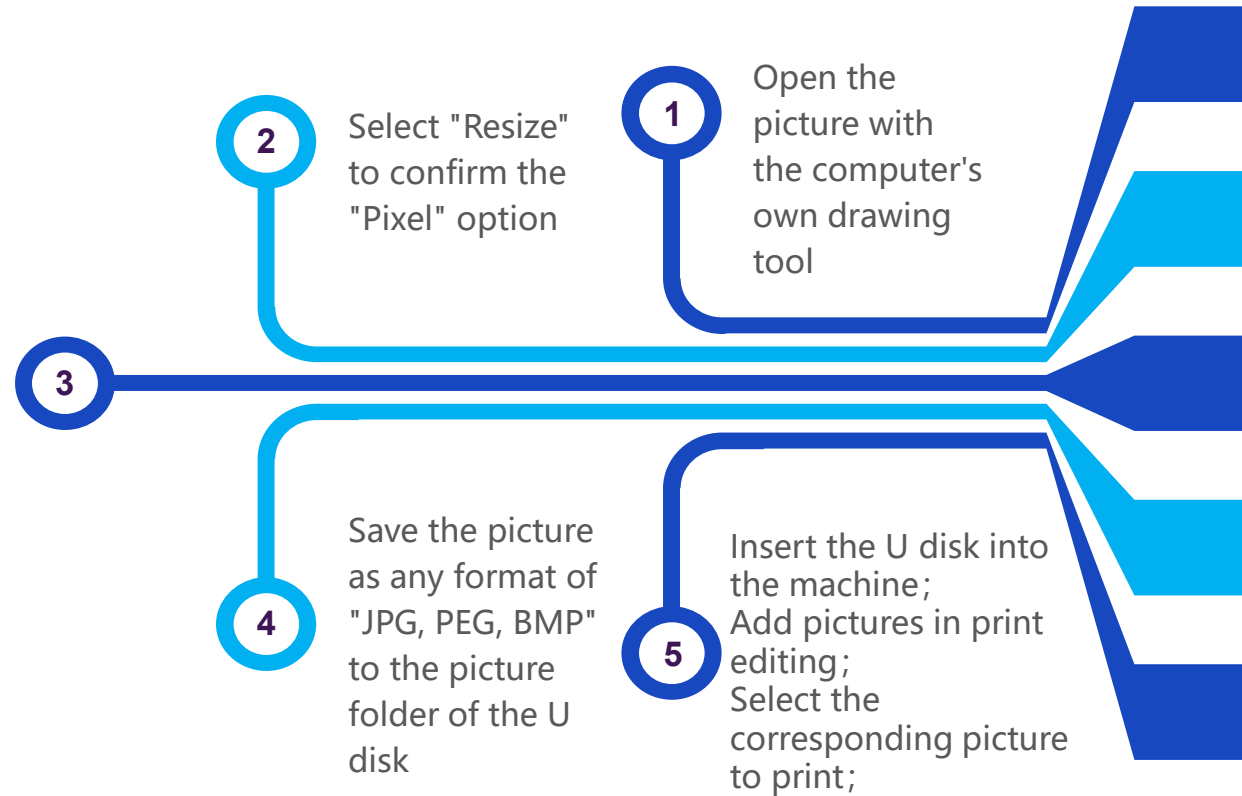
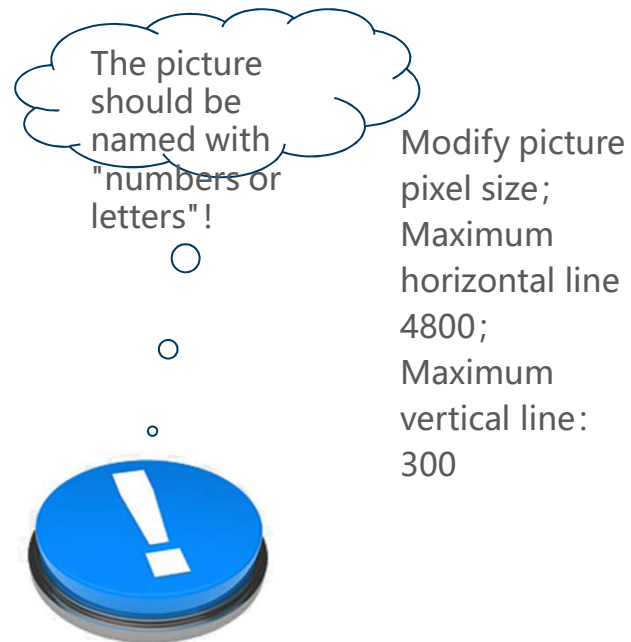
| Handheld printing | Induction printing | Picture printing | Variable printing |



# Handheld printing



# Picture printing





# Variable printing



One item, one code,  
variable  
identification

Make each product

Click "Add" through "Print Edit"  
on the main interface of the  
printer; select the "Database"  
function



- 1. The name of data source can only be letters or numbers
- 2. No line breaks or no content in the data source list cell

3

2

After the data source file format is modified, it needs to be placed in the "datebase" folder of the U disk directory, and then the U disk is inserted into the printer

1

Usually the data is an EXEL file. Open the data source file. The format should be saved as a Unicode text (\*.txt) format on the computer, and it needs to be opened again and saved as a UTF-8 format.

4

Variable text, QR code, and barcode can be selected according to printing requirements; click "confirm"

5

After selecting the data source file, click "OK", then select the required list in the data source, click "OK", you can perform a line break operation, click "OK"; then click "Print" to print the content in the order of the list.



# 04

## Application

| Product application | One item one code application | Application examples |



## Product application



### Food industry

Used for printing food flexible packaging, food can production date, expiration date, slogan promotion



### Sign industry

Used for tag, storage identification, large object identification, free from the shackles of labeling machine, printing at any time



### Printing industry

Used for logo printing, solving small batch printing, flexible and convenient proofing

## One item one code application



Anti-counterfeiting: You can check whether the product is authentic by querying the one-item one-code database.

Anti-migration: You can query the specific circulation channel of the product by querying the product code. Ps: Product inventory, out of stock, logistics, and channel flow all need to scan the QR code to upload to the server for recording.

Traceability: When a product quality problem occurs, the product code in question can be directly found through the data in the one-item one-code database, and a fixed-point recall can be carried out. These codes can be used to query the batch number, production line, specific responsible person, and raw material supplier of the relevant product.

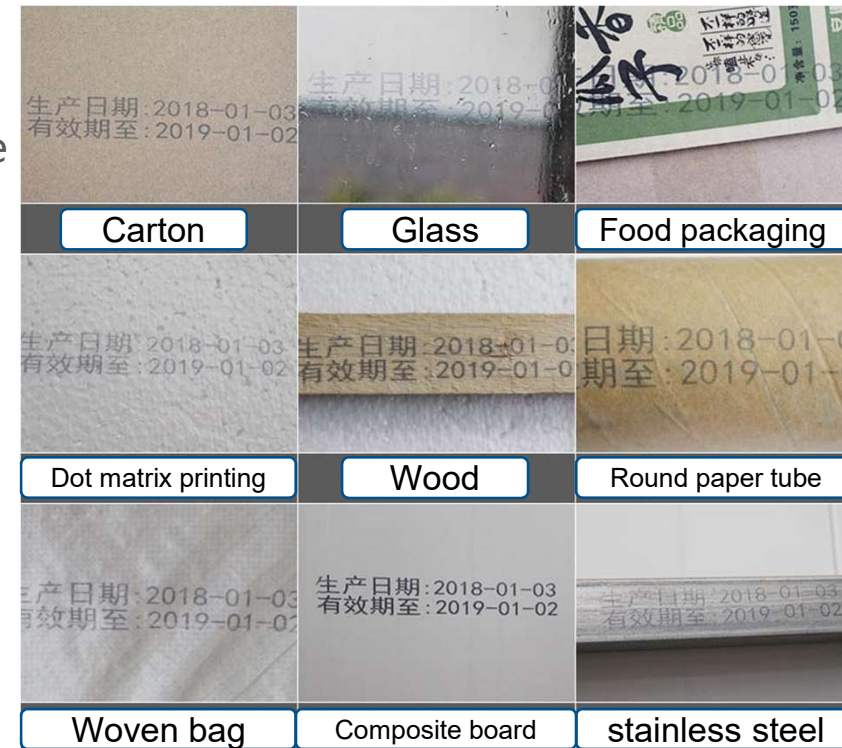
Marketing: This is the current expanded function, when consumers scan the QR code to identify the authenticity, one-item one-code can also prompt consumers to conduct prize surveys, discount promotions, accumulation of points, small gifts, etc. to attract fans and resell.



## Application examples



The printable content includes: text, letters, numbers, date and time, QR code, barcode, picture and variable code, etc.; the content can be combined at will.



## HonesTrader Internatialal Co., Ltd.

Web: [Http://www.honestrader.com.tw](http://www.honestrader.com.tw)

Email: [info@honestrader.com.tw](mailto:info@honestrader.com.tw)

Tel: +886-3-5551161

Add: 30267 No. 9, Aly. 17, Ln. 398, Sec. 1, Fenggang Rd.,  
Zhubei City, Hsinchu County, Taiwan





**THANKS!**