

## CLAMP.KT-A.

### 油壓夾具

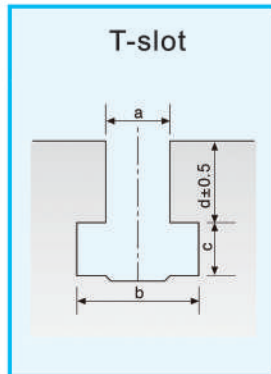
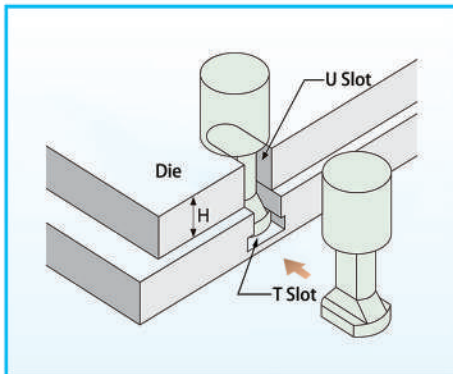
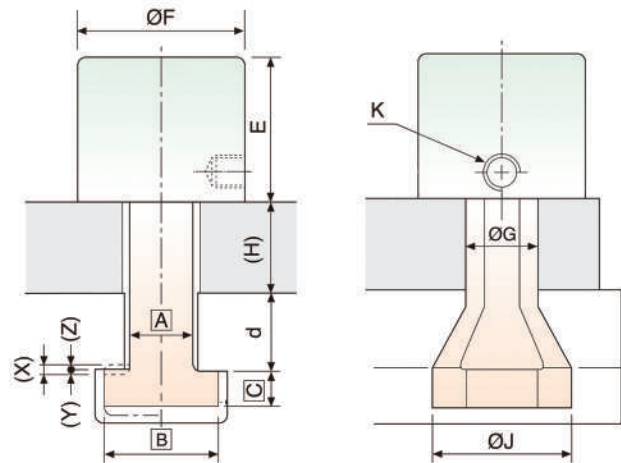
型式選用 THE CHOICE OF MODEL

**CLAMP KTA1-2-3.**

1	能力 CAPACITY 1~25 TONS.
2	A 標準型 STANDARD
	B 移動式 MOVABLE TYPE
	C 高溫式 TEMPERATURE-RESISTING TYPE
3	行走距離 SLIDE OF DISTANCE



- KTA型夾具系列使用上需搭配附有U型溝之模具。
  - KTA型夾具可選擇搭載氣缸系統，作遠距離夾模方式。
  - KTA series has a simple compact design-ideal for die or plates with U-cuts.
- Optional accessories such as auto-sliders are available upon request.



型式 MODEL	F	E	G	J	K
KTA-1	38	37	13	30	PT 1/8
KTA-2	49	52	16	38	PT1/8
KTA-4	62	59	25	60	PT1/4
KTA-6	78	65	30	65	PT1/4
KTA-10	98	71	40	80	PT1/4
KTA-16	127	78	50	90	PT1/4
KTA-25	157	96	60	100	PT1/4

型 式 MODEL	KTA-1	KTA-2	KTA-4	KTA-6	KTA-10	KTA-16	KTA-25
夾持力 Clamping force(at 250kf/cm <sup>2</sup> ) ton	1	2	4	6	10	16	25
總行程 (X)mm Full stroke mm	5	8	8	8	8	8	8
夾模行程 (Y)MM Clamping stroke mm	3	5	5	5	5	5	5
安全行程 (Z)MM Extra stroke mm	2	3	3	3	3	3	3
全行程所需油量 Cylinder capacity at full stroke cc	4 cc	6.5cc	13 cc	21 cc	32 cc	54 cc	84 cc

- 訂購時請指明T槽尺寸(a、b、c、d)及夾模處模板厚度(H)

Please indicate the size of T slot (a,b,c,d) and the thickness(H) of the template for the die when purchasing.

- 夾具A、B、C、D尺寸係配合T槽尺製作

The sizes of clamps A B C and D are made based on the size of T slot.