

CLAMP.KT-B.

油壓夾具

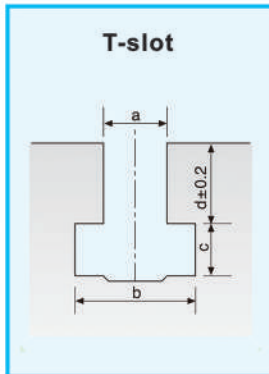
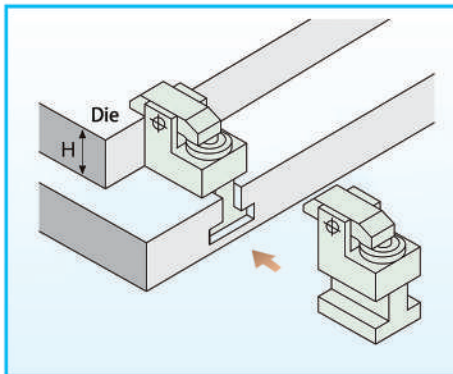
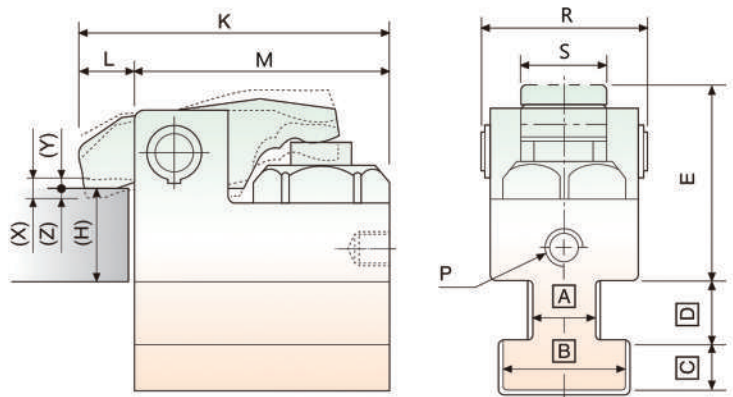
型式選用 THE CHOICE OF MODEL

CLAMP KTB1-2-3.

1	能力 CAPACITY 2~25 TONS.
	A 標準型 STANDARD
2	B 移動式 MOVABLE TYPE
	C 高溫式 TEMPERATURE-RESISTING TYPE
3	行走距離 SLIDE OF DISTANCE



- KTB型夾具適用於沒有附U型槽之模具。
- KTB型夾具廣泛應用於需要強而有力的多種用途。
- KTB型夾具可選擇選擇搭載氣缸系統，作遠距離夾模方式。
- KTB series clamp design can be used on dies without U-cuts on the die shoe.
- KTB series clamps are widely used for a variety of applications requiring powerful clamping force.
- Optional accessories such as auto-slider are available upon request.



型式 MODEL	K	M	L	Min (H)	Min (E)	R	S
KTB-2	101	83	18	50	54	58	28
KTB-4	143	120	23	50	69.5	73	40
KTB-6	163	130	30	60	81.5	93	50
KTB-10	195	165	30	70	107	104	55
KTB-16	230	200	30	80	132	125	60
KTB-25	270	240	30	80	168	155	72
KTB-50	300	270	30	80	182	185	85

型 式 MODEL	KTB-2	KTB-4	KTB-6	KTB-10	KTB-16	KTB-25	KTB-50
夾 持 力 Clamping force(at 250kf/cm ²) ton	2	4	6	10	16	25	50
總 行 程 (X)mm Full stroke mm	7	7	8	8	8	8	8
夾模行程 (Y)MM Clamping stroke mm	4	4	5	5	5	5	5
安全行程 (Z)MM Extra stroke mm	3	3	3	3	3	3	3
全行程所需油量 Cylinder capacity at full stroke cc	6.3 cc	13.2 cc	22.3 cc	37 cc	61 cc	93 cc	153 cc

- 訂購時請指明T槽尺寸(a、b、c、d)及夾模處模板厚度(H)

Please indicate the size of T slot (a,b,c,d) and the thickness(H) of the template for the die when purchasing.

- 夾具A、B、C、D尺寸係配合T槽尺製作

The sizes of clamps A B C and D are made based on the size of T slot.